

# COMUNE DI GHISALBA

PROVINCIA DI BERGAMO

## COMPONENTE GEOLOGICA PER LA PROGRAMMAZIONE DEGLI INTERVENTI TERRITORIALI

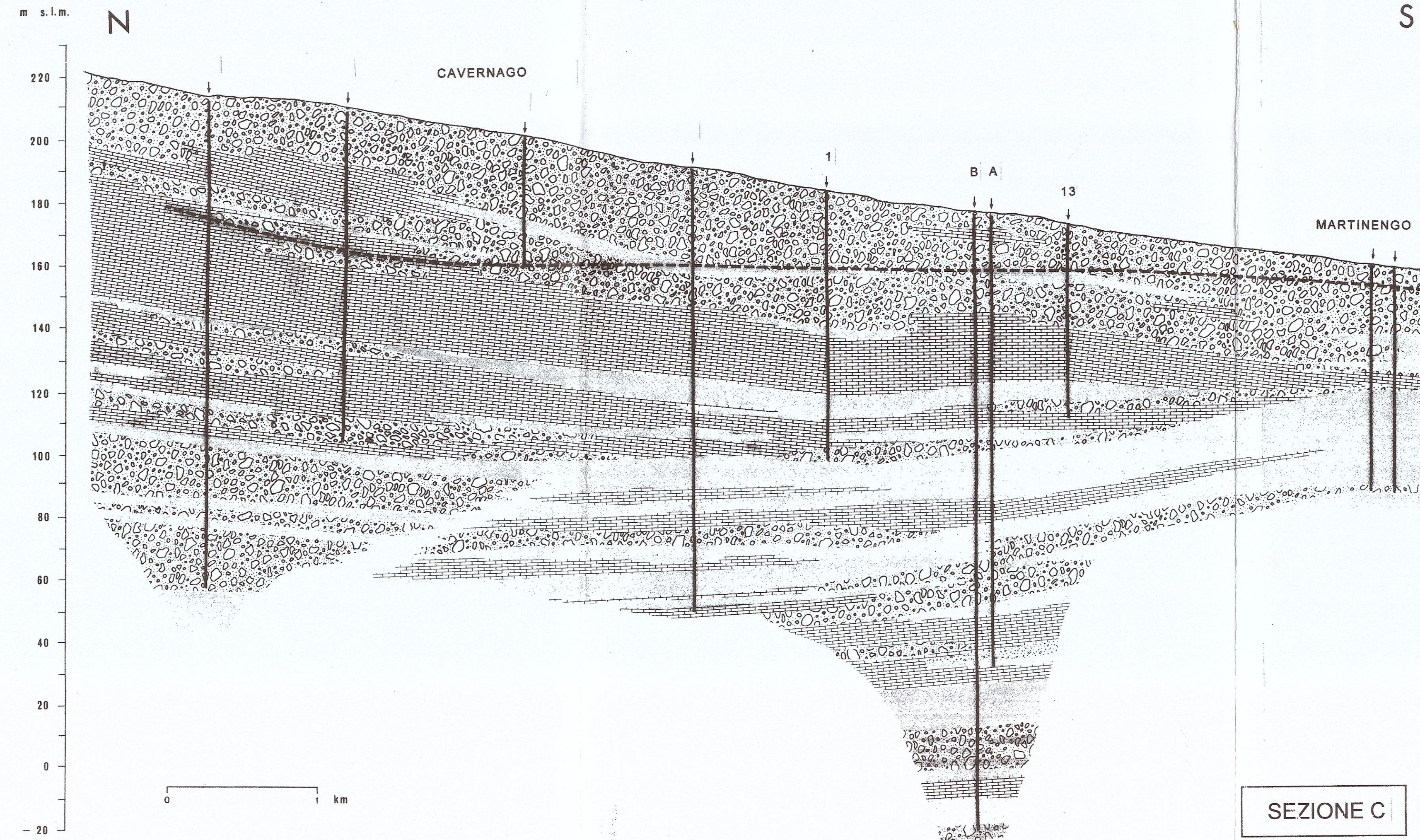
(in adeguamento alla L.R. 41/97 e D.G.R. n° 7/6645 del 29/10/2001  
e n° 7/7365 del 11/12/2001)

### SEZIONI IDROGEOLOGICHE C-D





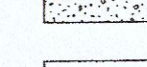
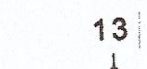
TAV. 3/b

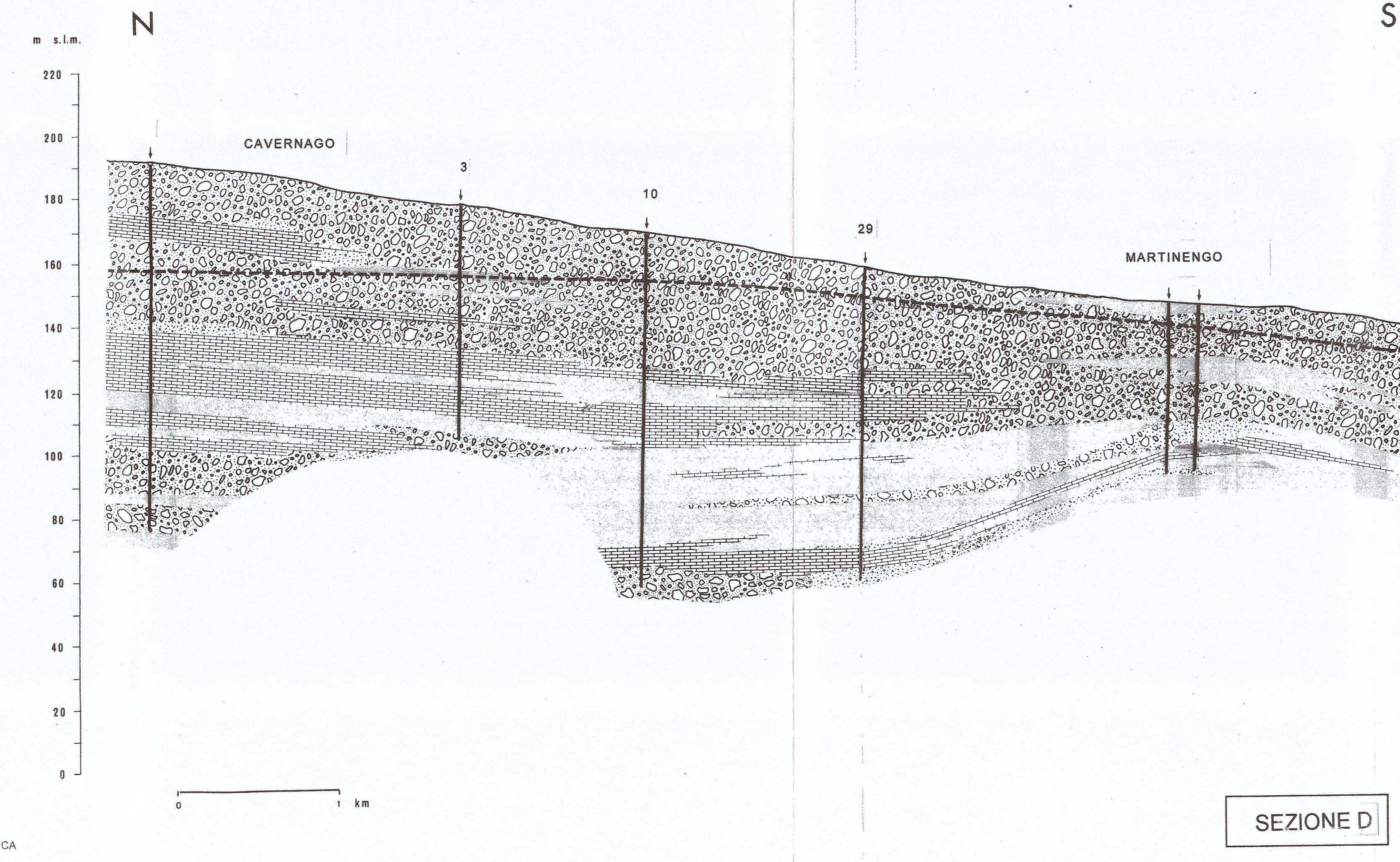
STUDIO GEOLOGICO Dr. GIOVANNI VAGNI Via G. Miglioli, n° 3, 26029 SONCINO



SEZIONE C

#### LEGENDA

-  CIOTTOLI E GHIAIA
-  SABBIA
-  ARGILLA E LIMO
-  CONGLOMERATO
-  13 | POZZI
-  - - - QUOTA PIEZOMETRICA



SEZIONE D